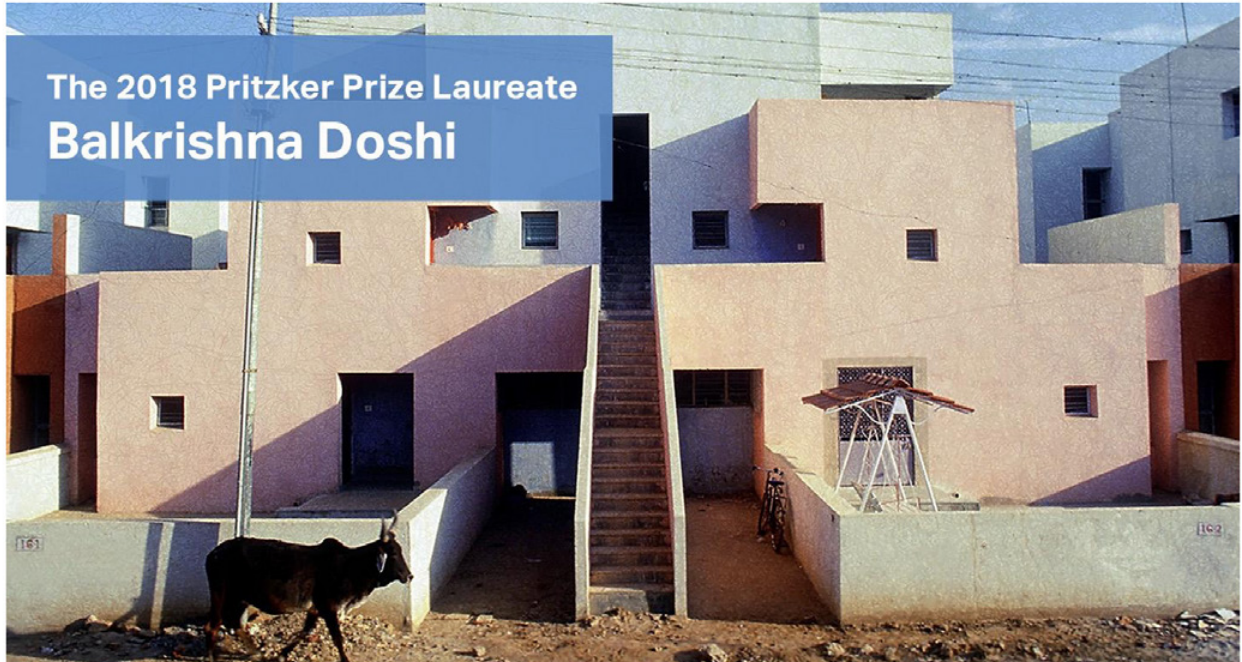


rebranding an international
fintech company adding
a twist to cancer cures
continuing to design for
the best in international
architecture managing
social media in madrid
helping to measure social
capital finance healthcare
construction and more.

The Pritzker Architecture Prize



The 2018 Pritzker Prize Laureate Balkrishna Doshi



Balkrishna Doshi
2018 Laureate



Rafael Aranda, Carme Pigem & Ramon Vilalta
2017 Laureates



Alejandro Aravena
2016 Laureate



Frei Otto
2015 Laureate



Shigeru Ban
2014 Laureate



Toyo Ito
2013 Laureate



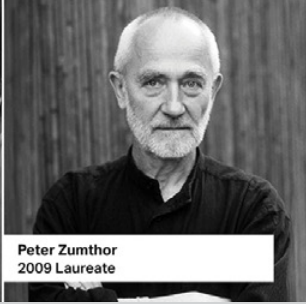
Wang Shu
2012 Laureate



Eduardo Souto de Moura
2011 Laureate



Kazuyo Sejima and Ryue Nishizawa
2010 Laureates



Peter Zumthor
2009 Laureate



Jean Nouvel
2008 Laureate



Richard Rogers
2007 Laureate

The Pritzker Architecture Prize

Amdavad Ni Gufa
1994
Ahmedabad, India
Photo courtesy of VSF



[Balkrishna Doshi Biography](#)



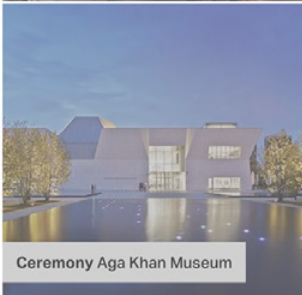
[Selected Works](#)



[Announcement](#)



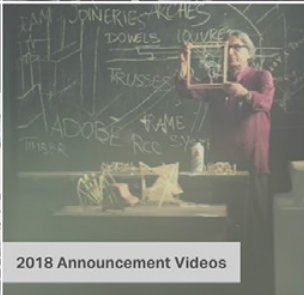
[Jury Citation](#)



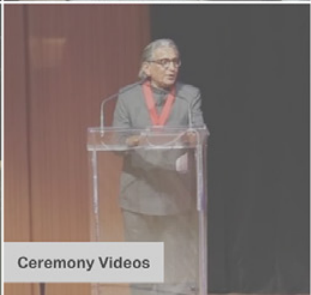
[Ceremony Aga Khan Museum](#)



[Images for Download](#)



[2018 Announcement Videos](#)

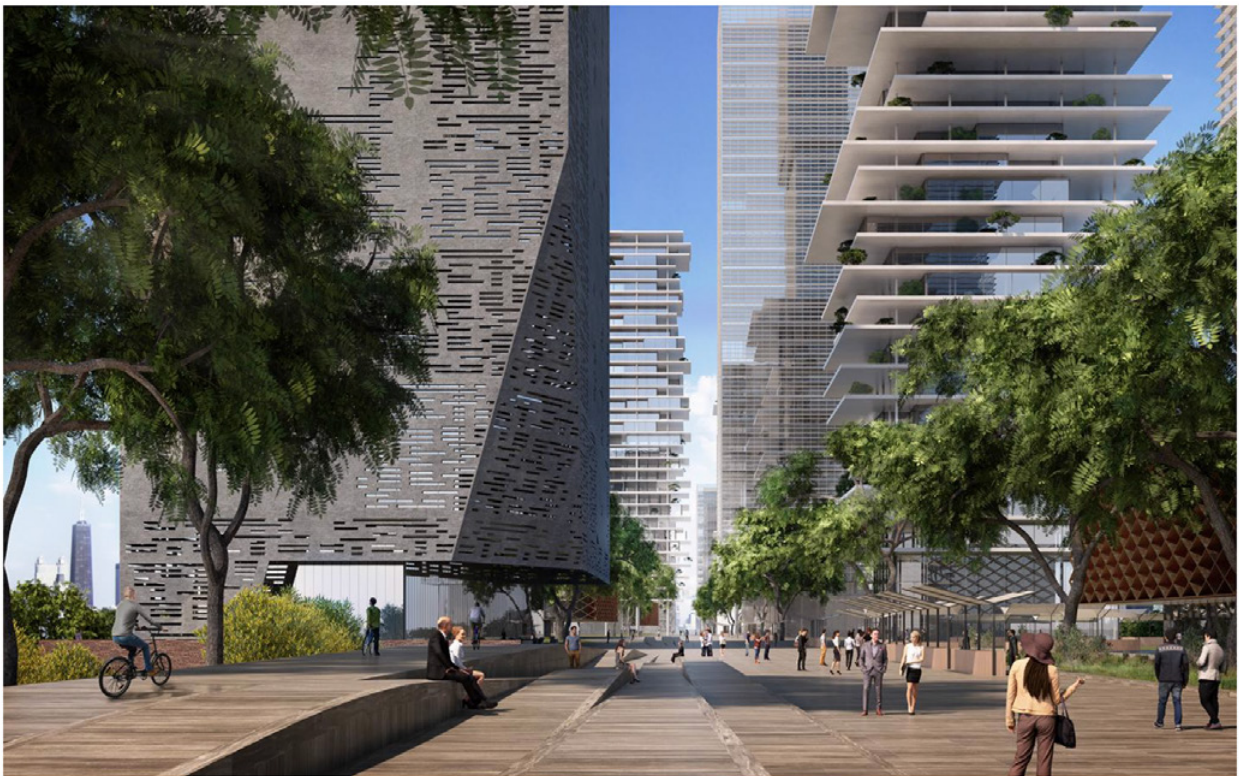


[Ceremony Videos](#)

An abstract artwork featuring a dark, textured background. The composition is dominated by dynamic, expressive splatters and drips of paint. In the upper left, there are splatters of light grey and yellow. The center and lower half are filled with intricate, chaotic patterns of white and black paint, creating a sense of movement and depth. On the right side, there are bold, vibrant splatters of red paint. The overall effect is one of raw energy and emotional intensity.

Twist Out Cancer Presents: **TwistShops**

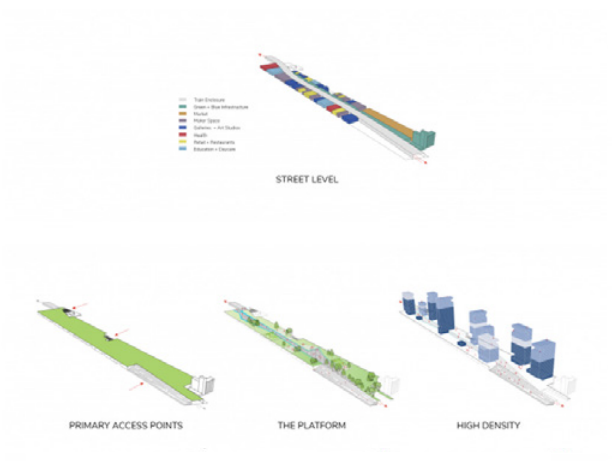
Art therapy focused
workshops that center
on storytelling and
healing for individuals
touched by cancer.



WEST SIDE CORRIDOR

CHICAGO, ILLINOIS
In Progress

This Planned Manufacturing District is defined by zoning to foster manufacturing through prohibiting residential development and other specific uses; this lack of flexibility can leave areas with vacant and underutilized land without integration with the surrounding neighborhoods. The site, a prime example, consists largely of vacant lots with a train line cutting directly through it. By building a platform on top of the rail lines, this approach kept the programmatic functions of a light-manufacturing district at the base while creating a space for other types of development above. The roofs of the base buildings join with the rail platform to create a landscaped area that serves as a 28-acre public park for the surrounding neighborhoods.





Almost Home Kids™
Share the Care

2018 Annual Report





[WORKFORGOOD.ORG](https://www.workforgood.org)

Where mission-driven talent is looking for you.

Hello from our team to yours! Work for Good is here to help your organization find the talent you need, and support you with tools and insight to ease your hiring process. And we're excited to tell you all about it.

Work for
GOODTM





Measuring o
Over the cour
using the follo
our success:

- Patient engage
- Global diversity
- Employee and p
- Biannual UVM M
assessments

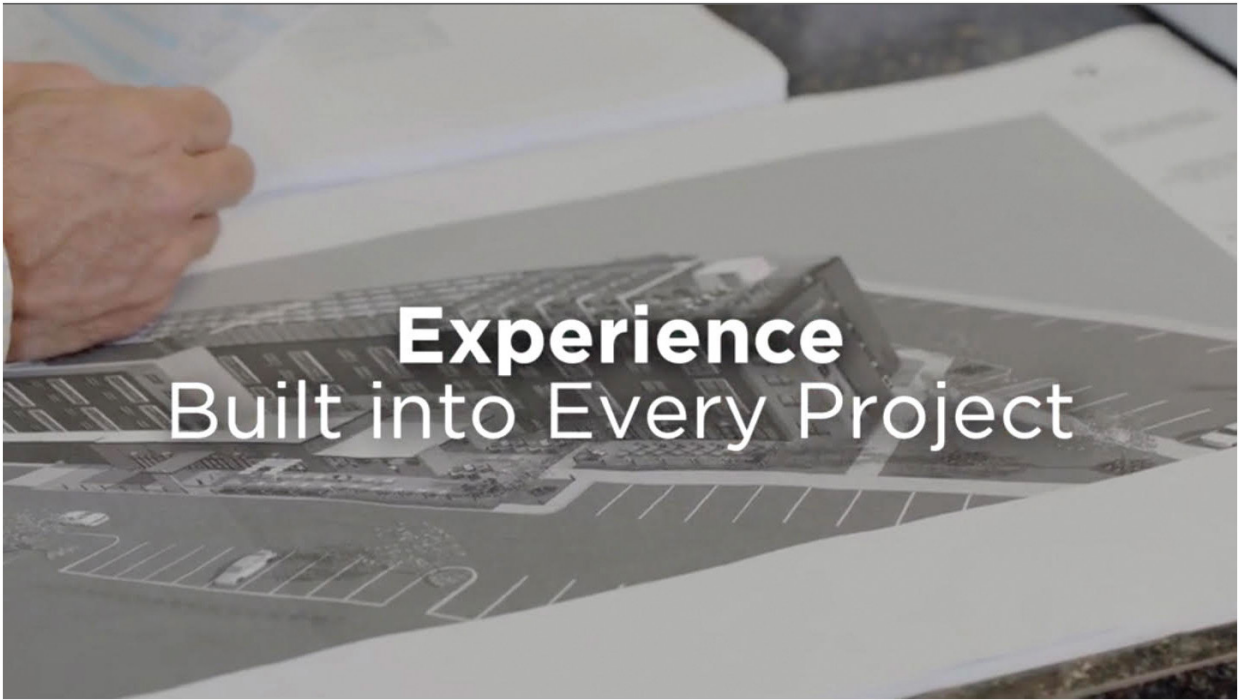


What we Mean by Equity, Diversity Equity

...e've come to a tipping
...king for change; we're
...Diversity and Inclusion
...n a personal level, it fulfills
...the common good. The
...JVM Medical Center
...king to create a culture in
...e human to each other. It's



“As a physician and researcher, I've come to believe in the
power of collective wisdom. The process of gathering
and perspectives is not only deeply rewarding
...st conclusion. During my ma
...dent and a ph



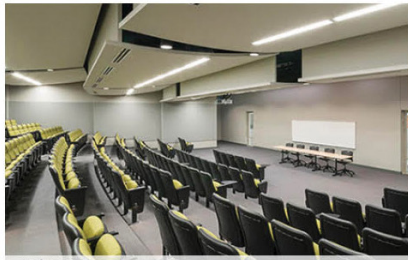
Madison Builds Success

At Madison, we think like an owner, valuing efficiency and cost savings without compromising quality. This Mindset demands that we reach beyond reading blueprints to leverage innovative funding sources, resourceful project strategies and expert contracting services that engineer value and ensure pricing integrity.

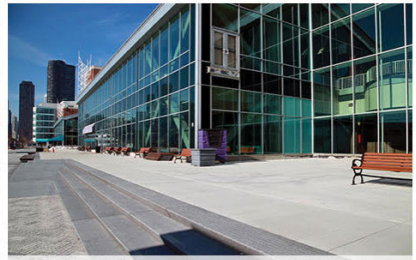
At Madison, we build success.



Housing



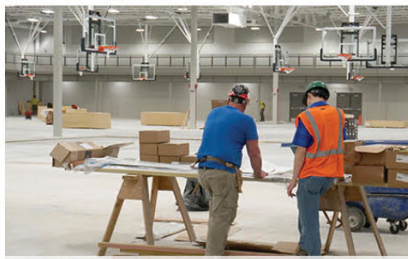
Education



Commercial



Recreation



Municipal



Healthcare



200+
Years of combined
staff experience



4 Years
being featured by
Crain's Fast 50



500%
Revenue growth in
the last eight years

Make a Difference with Madison

Envision, strategize and build facilities that matter in a community.

[Join our team](#)



#impactinvesting via @forbes
forbes.com/sites/annefiel...
#ReturnonPurpose #SocialInv

Return on Purpose

More →



Why Foundations Should Step Up Their Game
A group of 45 impact investors, researchers and philanthropists are calling for a new era of philanthropy in creating not just impact enterprises.
forbes.com



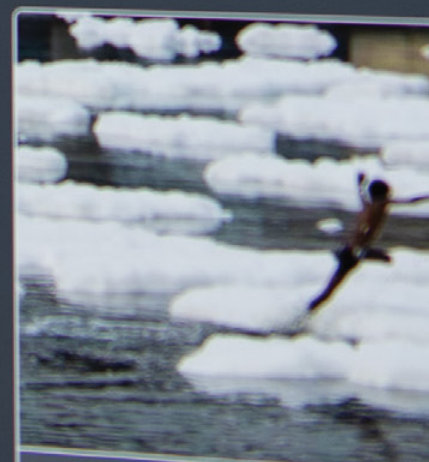
ProSocial Valuation
@ProSocialValue

👏👏👏 Bravo @BeyondSports @LesUkman



ProSocial Valuation
@ProSocialValue

Impact Investors Should Use U.N. Targeted Guide
barrons.com/articles
@BarronsOnline @LesUkman
#ReturnonPurpose #SocialInvesting #SRI



Impact Investors Should Use U.N. Targeted Guide
Targeting the Sustainable Development Goals
Investing Network says



Sign up here for Return on Purpose, your guide to advocacy and impact.

info@prosocalvaluation.com

Sign up

old
shington
llege

Residential
UrbanWorks²⁵

Education
UrbanWorks²⁵

terans
emorial
mpus



IE School of Architecture & Design
@ieArchDesign

- Home
- About
- Community
- Events
- Posts
- Videos
- Photos
- Instagram
- Twitter
- Reviews
- Info and Ads
- Notes

Like Share Send Message

Send Message



IE School of Architecture & Design
Like This Page · December 6, 2018 · Edited ·

Bachelor in #architecture students enjoyed Experimentation Workshop with Daniel Canogar that took place at Palacio de Quintanar. They worked together with Northeastern University students to produce artistic installations that allow them to practice real-world building skills. Students were prompted to utilize found or waste materials and practiced the rapid execution of projects and teamwork.

You can still enjoy the Exhibition at Palacioquintanar first floor!
Great pic by @RobertoArribas
#IEArchitecture #IEUniversity #DesignMatters #IETalent — at Palacio Quintanar.

@thecarelab in Segovia on Jan 16th and have a taste of the forthcoming Master in Strategic Design of Spaces program, starting Feb 11!
"Why do we design? How is design a much needed force in transforming care in our systems, societies and services?"

Related Pages

IE Alumni
College & University



globalpayments

We help businesses of all sizes prosper by delivering custom payment and technology solutions.

Learn More

Service. Driven. Commerce

...to exemplary Service to our employees, customers...
...needs of our customers. As payment...
...relative to Comm...

globalpayments

Welcome

Overview

Visual Guidelines

Brand Applications

Stationery: business cards, letterheads, envelopes, cards and folders

Email signature

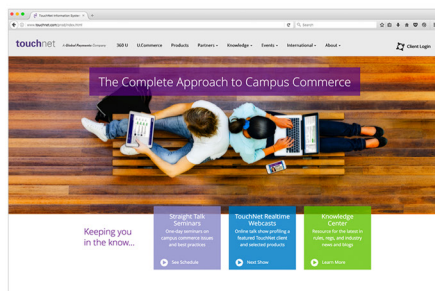
Sales materials: sell sheets, white papers, multi-page documents and trifolds

Informational: single page documents, playbooks, manuals and other multi-page documents

Digital/web

Website headers

The identifier "A Global Payments Company" will appear in headers for most brands other than the Global Payments brand. The identifier should be placed to the right of the wordmark. On mobile devices, the identifier moves underneath the wordmark if there is not sufficient space next to it. See examples. For more information regarding our corporate websites, portals or landing pages, contact your local marketing team or shaun.baddock@globalpay.com.





2018 Annual Investor Meeting

SEPTEMBER 28 IN CHICAGO
RSVP BY SEPTEMBER 14

[CLICK HERE](#)



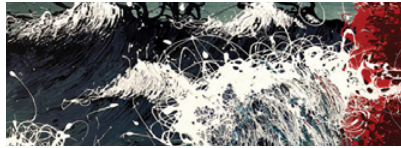
HeltzerBikes





The Pritzker Architecture Prize

We continue our work with the most prestigious international prize in architecture, providing a wide range of branded materials.



Twist Out Cancer

Twist Out Cancer helps survivors to create a global community of support. Liska continues to help the organization by designing communication materials for their expanding initiatives and events.



Brininstool + Lynch

We recently evolved the website for longtime client Brininstool + Lynch, an internationally recognized architectural firm.



Almost Home Kids

Liska designed the latest annual report—along with materials to support their newest location—to illuminate this expanding organization's exceptional work: helping medically fragile children transition from the hospital to home.



Work for Good

This nonprofit focuses exclusively on mission-driven careers. We help Work for Good with communication materials to help promote their services.



University of Vermont Medical Center

This Level One Trauma Center launched an initiative to raise diversity awareness among their employees and to better serve the community. We also support their internal and external communication efforts with various print materials.



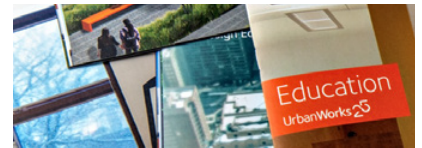
Madison Construction

We designed a new website for this construction company in order to showcase the depth and breadth of their experience in the Midwest.



ProSocial Valuation

The ProSocial Valuation team has figured out how to analytically measure and evaluate both the social impact and the value of their clients' philanthropic efforts. Liska worked with Lesa Ukman Partnerships to develop the branding, website and ongoing marketing for this data driven service.



UrbanWorks

UrbanWorks is a socially and environmentally responsible architectural firm with civic, private and commercial sector clients. Liska continues to support their communication efforts, designing a series of brochures to showcase the depth of the firm's experience in key architectural markets.



IE School of Architecture and Design

This Madrid-based university welcomes students from all over the world to experience learning with real world implications. Liska is helping to manage the School's robust social media strategy directed at potential students, the university community and beyond.



Global Payments

Liska helped to rebrand and simplify the communications of this international financial technology and payment processing firm. We continue to consult with evolving brand guidelines, brand research, strategy and other initiatives.



Equity International

Part of the Zell Organization, Equity International is a global real estate and infrastructure investment firm. We continue to work with them on a variety of initiatives.

