

Liska + Associates

strategic +
creative +
solution-driven +
audience-focused +
efficient

brand programs +
identity +
package design +
web design +
print marketing +
brand positioning +
motion +



BLUHM CARDIOVASCULAR INSTITUTE

Clinical Activities and Outcomes Report 2009

Transforming the Future of Medicine

Provide Comprehensive
Cardiovascular Care

Align Research, Technology
and Outcomes

Excel Through People,
Academics and the Community

A Message from Our Director, Patrick M. McCarthy, MD



In 2004 when the Bluhm Cardiovascular Institute of Northwestern was created, we set out to build a nationally recognized program that delivered safe and highly specialized cardiovascular care. Now, five years later, our superior outcomes and stellar reputation have allowed us to become a world-class provider of cardiac and vascular care.

In 2010, *U.S. News & World Report* ranked our Heart and Heart Surgery program 14th in the nation. This external recognition is important, but it is what we do for our patients every day that makes us proud.

Patrick M. McCarthy, MD

*Chief
Division of Cardiac Surgery
Northwestern Memorial Hospital*

*Director
Bluhm Cardiovascular Institute*

*Heller-Sacks Professor of Surgery
Northwestern University
Feinberg School of Medicine*

Next Section

[Contact Us](#) | [Disclaimer](#) | [Privacy Policy](#)

Copyright ©2010 Northwestern Memorial Hospital

For more information,
visit heart.nmh.org

View our 2009
Clinical Outcomes
Booklet ([pdf](#))



BLUHM CARDIOVASCULAR INSTITUTE

Clinical Activities and Outcomes Report 2009

In 2010, *U.S. News & World Report* ranked our Heart and Heart Surgery program 14th in the nation.



Untitled (Afromuse), 1995–2005
Watercolor and pencil on paper
9.57 in. x 6.18 in.
Private collection



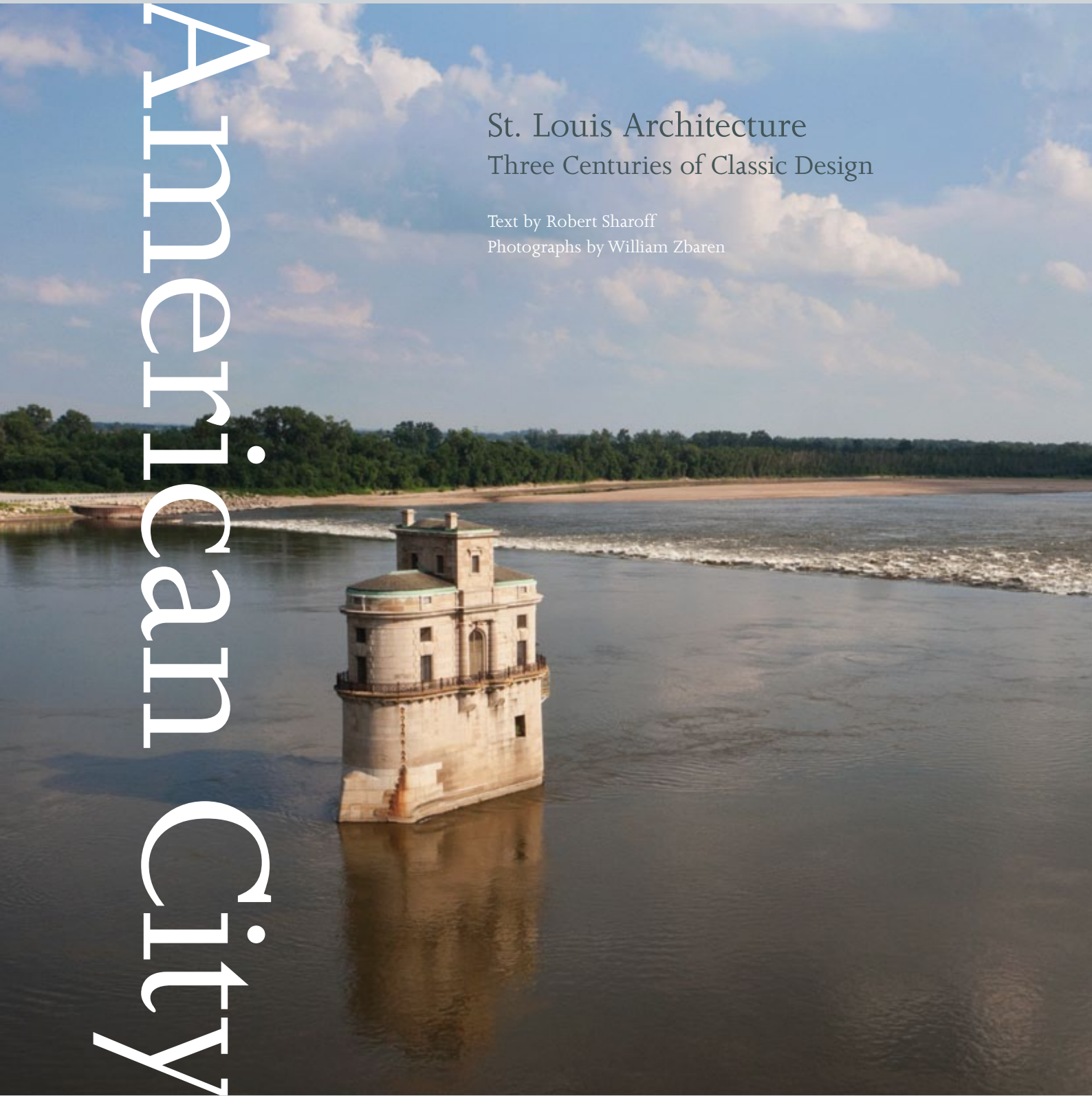
Untitled (Afromuse), 1995–2005
Watercolor and pencil on paper
9.57 in. x 6.18 in.
Private collection

American City

St. Louis Architecture Three Centuries of Classic Design

Text by Robert Sharoff

Photographs by William Zbaren







JEWEL BOX

Forest Park
William C.E. Becker
1936

The Jewel Box marked a turning point in St. Louis's civic architecture. In a park noted for its many classically inspired structures, city engineer William C.E. Becker took his design cues from such modern sources as the airplane hangar and the long, low industrial buildings of Detroit architect Albert Kahn. The surprise is how well this fundamentally utilitarian style works for buildings of an ornamental and ceremonial nature. The clearly visible skeleton-like steel structure – a hallmark of the Bauhaus but also highly characteristic of such Victorian icons as London's Crystal Palace – has a delicate beauty not unlike that of the flowers and plants the building shelters. The total cost was \$117,000, about half of which was WPA (Works Progress Administration) stimulus money from the Federal government.



STEVE GRUBMAN PHOTOGRAPHY: WESTMINSTER DOG



SHOW





CHAI
MING

STUDIOS

Represented by

Christina Lucas
P 312 972 3110
christina@lucidcollections.com
www.lucidcollections.com

Shown: Rouen table

Showroom

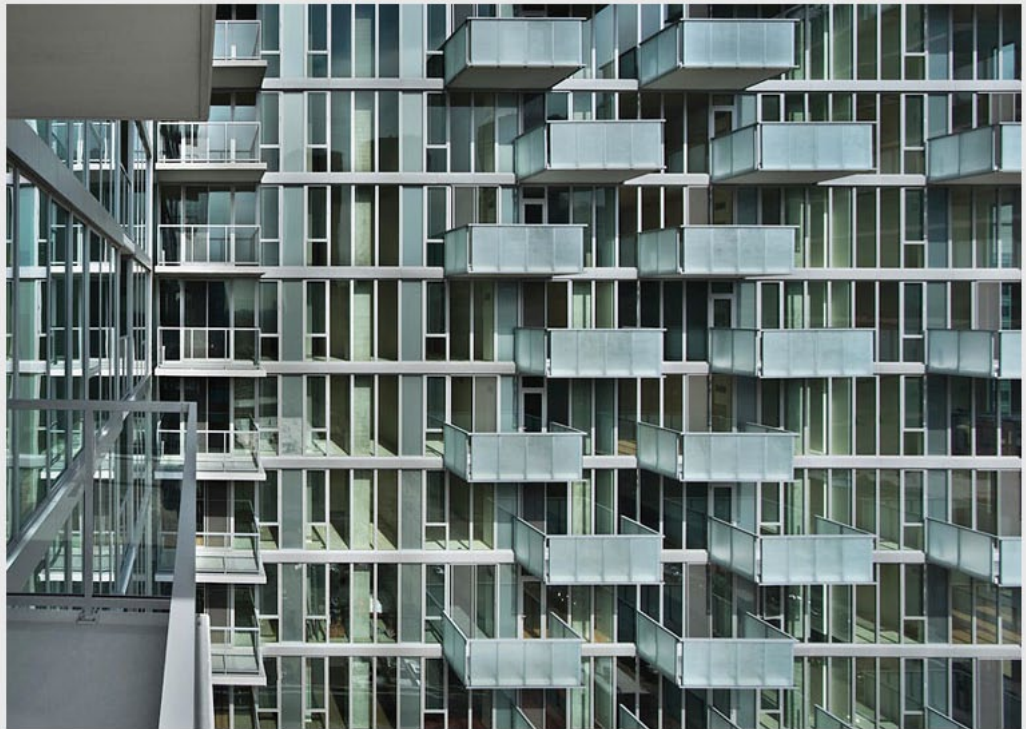
The Merchandise Mart
222 Merchandise Mart Plaza
Suite 1689
Chicago, IL 60654

P 312 644 8484
F 312 644 8444
www.chaimingstudios.com

B|K|L

English | 中文 | 한국어

特色项目
项目分类
市政项目
文化/教育/公共建筑
酒店空间
住宅
多功能综合体
办公
特殊项目



公司
团队
新闻
联系

©2011 BKL



jeff kauck: food



[galleries](#)

[motion](#)

[about](#)

[client access](#)

© jeff kauck photography 2010

jeff
kauck:
food





MAD
ABOUT
COLOR



Illinois
Is there a cure?

A COOL BREEZE

GARY LEE
STUDIOS

CHAI
MING
STUDIOS



70



Almost
HomeKids™
Share the Care

B|K|L

cure
VIOLENCE

Mad About Color Salon Hair Care Line
A Cool Breeze Specialty Retail
Adopt A Rescued Friend No-Kill Shelter
Almost Home Kids Pediatric Medical Care Facility

Found Animal Rescue Center
Gary Lee Studios Product Design
Sub70 Men's Apparel Line
Brininstool, Kerwin and Lynch Architecture Firm

Metropolitan Planning Council Policy/Advocacy
Chai Ming Studios Luxury Furniture Line
Day of the Dog Awareness Event
Cure Violence Youth Advocacy Program



[find a place](#)

[find a neighborhood](#)

[find resources](#)

[what is domu?](#)

[log in / register](#)
[my favorites](#)

[landlords](#)

chicago's apartment resource

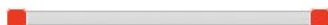
neighborhood:

no preference

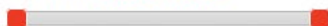
bedrooms: **studio - 7+**



bathrooms: **1 - 7+**



price range: **\$400 - \$9000+**



go!



wicker park
alliance bakery

what domu digs

what has the domu team unearthed?

domu most popular building

see where everyone wants to live

domu most visited unit

your search has made this unit our most popular

domu landlord portal

join the domu crowd and post your listings



Mad About Color

Liska helped launch Mad About Color, the salon-based brand of color refresh products. We designed everything from the brand identity and packaging to the website and marketing materials to express the line's bold color products.



Bluhm Cardiovascular Institute

The Bluhm Cardiovascular Institute, a world-class cardiovascular center, evaluates its clinical outcomes each year and showcases the results in an annual report. This year, Liska created a microsite to reach a broader audience and complement the print edition.



The Arts Club of Chicago

Since the 1920s, The Arts Club of Chicago has showcased exhibitions by some of the finest contemporary artists in the world. Liska continues to design catalogs and didactics for a number of these exhibits including Chris Ofill's first Chicago exhibition, "Afrotranslinear."



American City Series

American City: St. Louis Architecture is another installment in the American City series of hardcover books that highlight the architecture of America's greatest urban areas. Liska designed the book, the series and other materials to market the book.



Steve Grubman Photography

Steve Grubman photographs a wide range of subjects, with an emphasis on animals. Liska designed a promotional book to showcase his editorial view of the Westminster Kennel Club Dog Show.



Chai Ming Studios

The Chai Ming Studios line of furniture exudes luxury while maintaining authenticity and functionality. Liska created a branding system, advertising, website and marketing materials to reflect the line's elegance.



Brininstool, Kerwin and Lynch

Brininstool, Kerwin and Lynch (BKL) is an internationally recognized architecture firm. As part of an extensive brand evolution to embody a new company structure and international expansion, Liska redesigned BKL's website to present the firm's core strengths to a global audience.



Jeff Kauck Photography

Noted food photographer Jeff Kauck has been featured in magazines, cookbooks, packaging and advertising. Liska created a branded identity system, website and promotional book to increase awareness of Jeff's work.



12 Benefits

Paulmaier Enterprises develops innovative, upscale, salon-based hair products. Liska worked closely with the client to develop a comprehensive brand program and packaging design for the company's 12 Benefits hair treatment line.



Domu

Domu is Chicago's number one apartment resource. Since Domu's inception, Liska has been working with the company to develop a name, brand criteria, messaging and overall experience. After designing the website we wrote and produced a wide variety of media to support the web experience — from ads to bar coasters to billboards that blanket the city.

