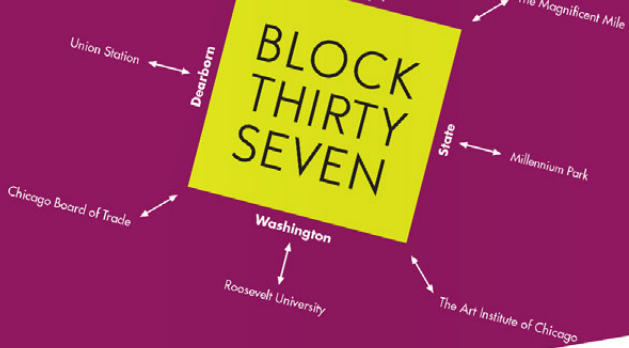




**Liska+Associates**

strategic +  
creative +  
solution-driven +  
audience-focused +  
efficient +

brand programs +  
identity +  
package design +  
web design +  
print marketing +  
brand positioning +  
motion +



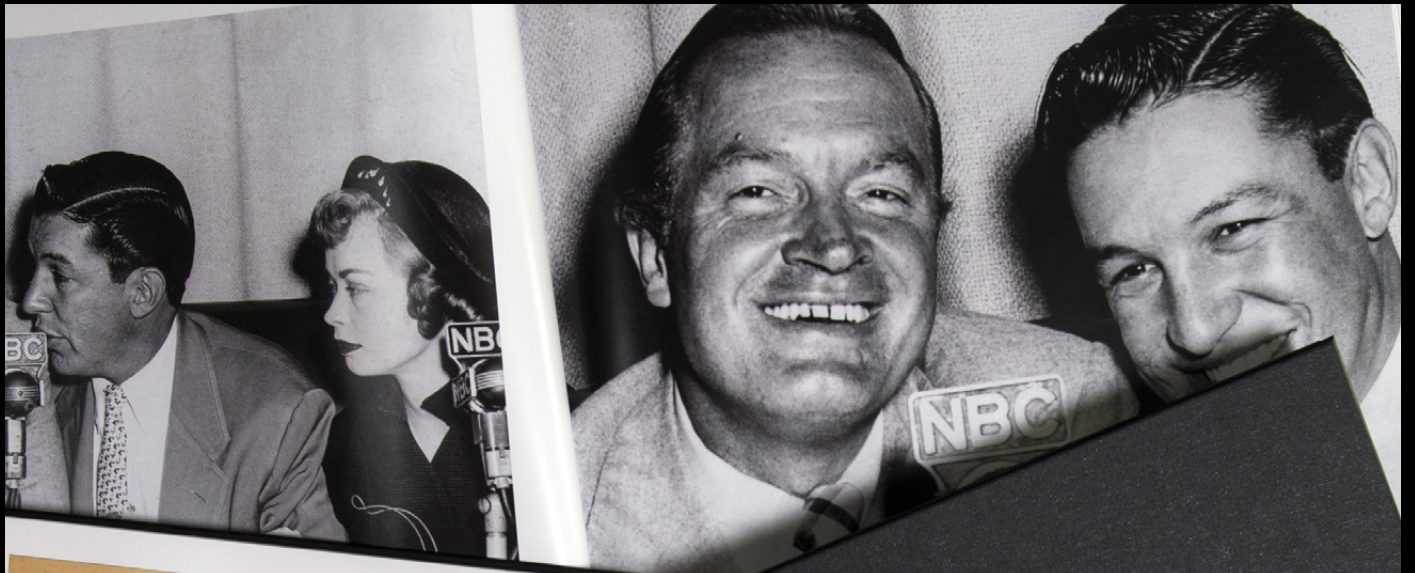
...aining and entertain...  
 Thirty Seven provides a **unique lifestyle experience**. It is **the place** in **downtown Chicago** with sophisticated retailers and an **aspirational** style-conscious consumer. Block Thirty Seven differentiates itself from its competition through **forward thinking** and an **evolving vision** of an urban retail destination. Block Thirty Seven: **the intersection of life and style**.

# BLOCK THIRTY SEVEN

The Intersection of Life and Style



Transformative. Enlivened. Iconic Style.  
 Block Thirty Seven is leading the transformation of the new Loop experience.



CLASS OF SERVICE  
 This is a full-rate Telegram or Cablegram unless its deferred character is indicated by a suitable symbol above or preceding the address.

**WESTERN UNION**  
 W. P. MARSHALL, PRESIDENT

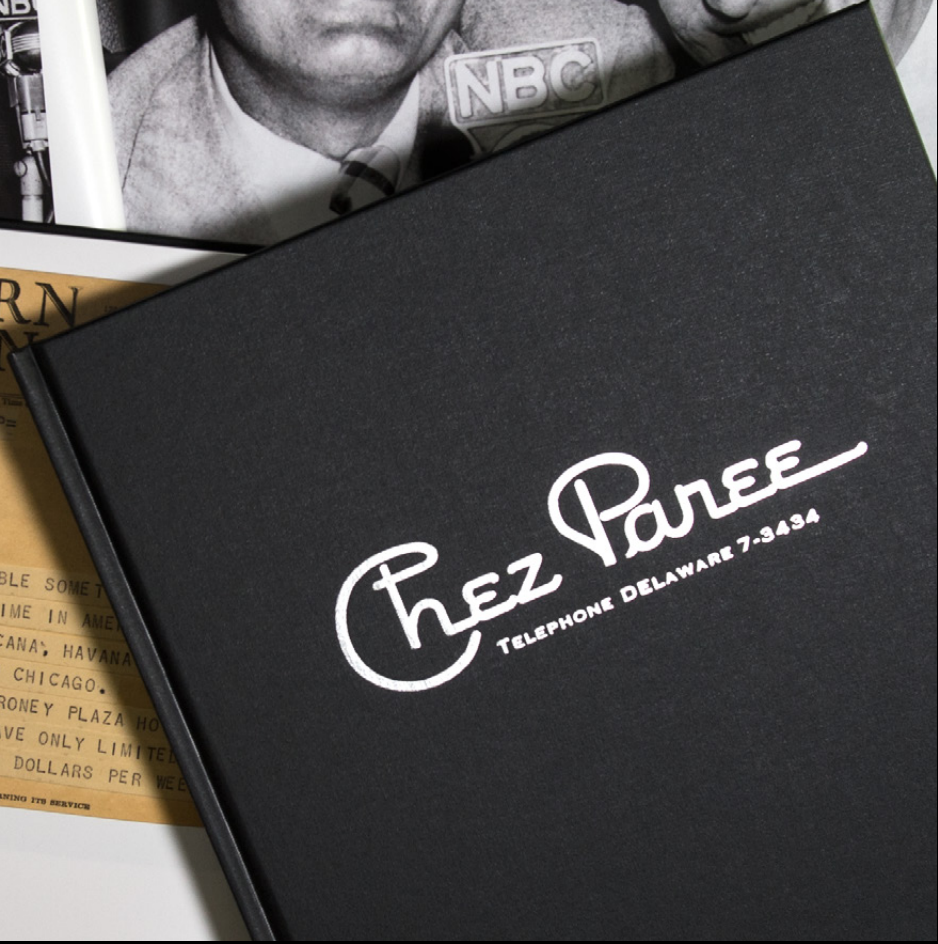
The time shown in the date line on telegrams and day letters is STANDARD TIME at point of origin.

CAN129 DL PD=RK NEWYORK NY 14 204P=  
 DAVE HALPER=  
 CHEZ PAREE=

HAVE GREAT ATTRACTION FOR YOU AVAILABLE SOME  
 OF FEBRUARY JOSEPHINE BAKER. FIRST TIME IN AME  
 OVER TWENTY YEARS. NOW PLAYING TROPICANA, HAVANA  
 THIS ATTRACTION SHOULD BE TERRIFIC IN CHICAGO.  
 IF YOU ARE INTERESTED PLEASE WIRE ME RONEY PLAZA HO  
 MIAMI BEACH FLORIDA; IMMEDIATELY AS HAVE ONLY LIMITED  
 BOOKINGS AVAILABLE. PRICE TEN THOUSAND DOLLARS PER WEE  
 WILLARD ALEXANDER=

SUGGESTIONS FROM ITS PATRONS CONCERNING ITS SERVICE

For Mister Halper!  
 The owner Dave "Dingy" Halper was in  
 hearing the talent, and received many  
 in case, dancer, singer and actress  
 Baker was the latest in question.  
 y were about Baker, the "Black Venus,"  
 triumphantly to the United States in  
 by after this telegram was sent. Fearing  
 racial prejudice she had fled in the  
 refused to perform her cabaret act  
 at nightclubs. Ultimately, Chez Paree  
 it deemed Baker's fee too high, and  
 perform at the club.

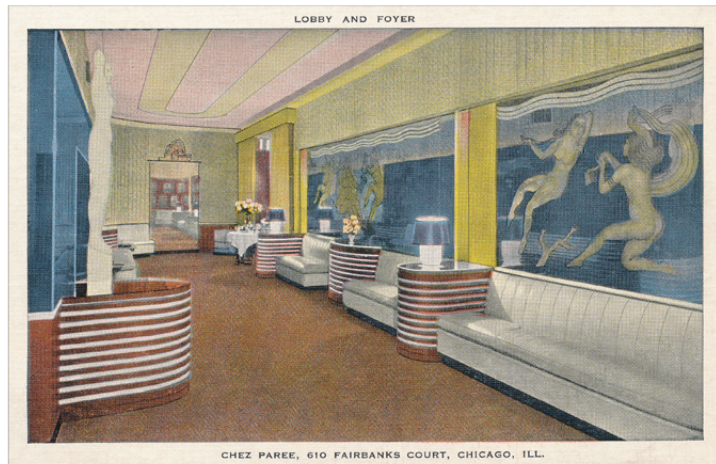




**Durante Charms Chicago at the Chez**

Known for the size of his schnozz, the large-nosed Jimmy Durante was one of the most popular acts to grace the Chez stage over three decades. The big-hearted entertainer started playing the Chez Paree in the 1920s, and the Chez remained his favorite place to appear in Chicago until the club closed in 1962. Durante is shown here with Chez Paree's line dancers, the Adorables.

Chez Paree 17



**LOBBY AND FOYER**

**CHEZ PAREE, 610 FAIRBANKS COURT, CHICAGO, ILL.**

**Wish You Were Here, at America's Smartest Theater Restaurant**

For those who could afford it, nightclubs provided a way to escape the unending dreariness of the Depression years. Because it was a rare splurge, club-goers would stay out nearly all night, and take home a souvenir to remember the occasion. Above, a 1930s postcard showcases the "smart" Art Deco décor of the Chez Paree lobby and foyer. The back of the postcard reads, "Spectacular Shows, Famous Dance Bands. Air Conditioned the year round." When the cigarette girls at Chez Paree came around to show their wares, customers could select (in addition to cigarettes and cigars)

souvenir trinkets and toys to take home to their children. They might find a souvenir bracelet like the one pictured at right. The bracelet pays homage to a number of Chicago attractions including Chez Paree, The Ambassador, and the Blackhawk Restaurant. The Blackhawk, home of the Spinning Salad Bowl, was where bandleader Bob Crosby (Bing's brother) hosted a national radio show, and where the jazz hit "Big Noise From Winnetka" was composed. Other mementos of the Depression era include a key to the exclusive Key Club, gambling tokens and dice.



# The Pritzker Architecture Prize

Sponsored by The Hyatt Foundation

[ABOUT THE PRIZE](#)

[2014 LAUREATE](#)

[PAST LAUREATES](#)

[MEDIA CENTER](#)

[CONTACT](#)

[English](#) [简体中文](#)

- [Announcement](#)
- [Biography](#)
- [Ceremony](#)
- [Jury Citation](#)
- [Selected Works](#)

- [Media Downloads](#)
- [Past Laureates](#)

## Shigeru Ban 2014 Laureate



©2014 The Hyatt Foundation



## The Pritzker Architecture Prize

Sponsored by The Hyatt Foundation

[ABOUT THE PRIZE](#)

[2014 LAUREATE](#)

[PAST LAUREATES](#)

[MEDIA CENTER](#)

[CONTACT](#)

[English](#) [简体中文](#)

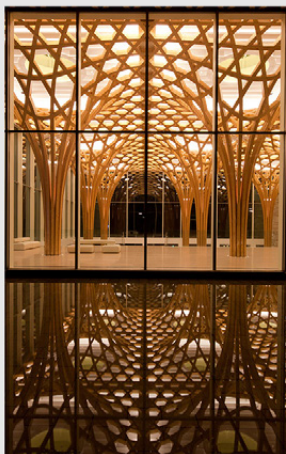


Shigeru Ban  
2014 Laureate



- [Announcement](#)
- [Biography](#)
- [Ceremony](#)
- [Jury Citation](#)
- [Selected Works](#)

- [Media Downloads](#)
- [Past Laureates](#)



Hansley Nine Bridges Golf Club House, Korea, 2010  
Photo by Hiroaki Hira

©2014 The Hyatt Foundation



## The Pritzker Architecture Prize

Sponsored by The Hyatt Foundation

[ABOUT THE PRIZE](#)

[2014 LAUREATE](#)

[PAST LAUREATES](#)

[MEDIA CENTER](#)

[CONTACT](#)

[English](#) [简体中文](#)



Shigeru Ban  
2014 Laureate



- [Announcement](#)
- [Biography](#)
- [Ceremony](#)
- [Jury Citation](#)
- [Selected Works](#)

- [Media Downloads](#)
- [Past Laureates](#)



Cardboard Cathedral, Christchurch, New Zealand, 2013  
Photo by Stephen Goodenough

©2014 The Hyatt Foundation



UNO Galewood Elementary School

2013  
Department of  
Nursing Annual  
Report

Messages from  
Leadership

Transformational  
Leadership

Structural  
Empowerment

Exemplary  
Professional Practice

New Knowledge,  
Innovation and  
Improvements

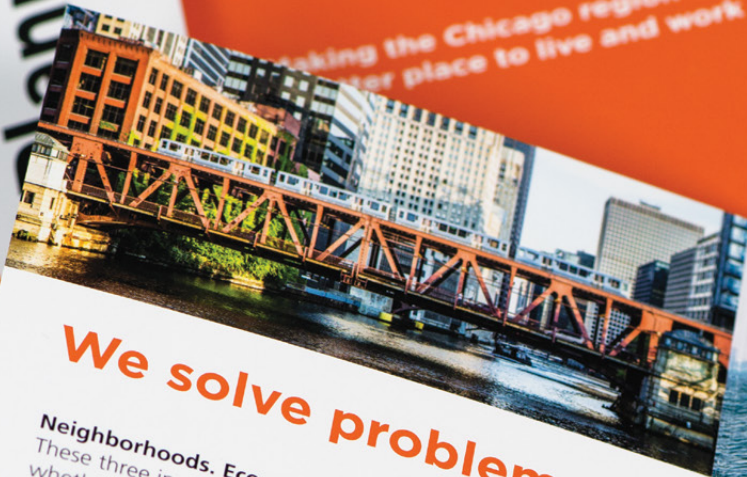
2013 Certified  
Nurses



(From left) Laura Meller, MS, APN, CNS-BC, manager of Acute Care Services, received the 2013 Advanced Practice Nurse of the Year award and Laura Pamay, BSN, RN, CPAN, CAPA, a clinical nurse in Surgical Services, received the 2013 Nurse of the Year award.



Making the Chicago region  
a better place to live and work



## We solve problems.

**Neighborhoods. Economy. Infrastructure.**  
These three ingredients, more than any others, determine whether metropolitan regions thrive.

In the Chicago region, Metropolitan Planning Council (MPC) strives every day for more effective, efficient and reliable options for the millions of people who call, or will call, this place home. Between 2015 and 2020, our agenda is paving the way for bold, yet achievable outcomes that address today's urgent problems while preparing our region and others for the needs of tomorrow.

Partnering with MPC makes the Chicago region a better place to live and work. Here's how our five-year goals are accomplishing that:

-  Creating 75,000 new jobs through increased infrastructure investment
-  Reducing housing costs for 8,000 people by fostering the preservation and development of quality homes for a range of incomes
-  Attracting 100,000 new residents to live within a half mile of transit by promoting smart development
-  Saving tax dollars by identifying and institutionalizing more efficient government practices

## We connect

We rely on an intricate backbone of you. But don't just take our word for



**Terry Mazany**  
President and CEO  
The Chicago Community Trust

"The Chicago Community Trust supports Metropolitan Planning Council because they are that rare organization with the capacity to combine data analysis, thoughtful strategy, and on-the-ground demonstration projects to address the most pressing challenges. MPC is on the front lines of the movement to unlock Chicagoland's full potential."



**Terri Procknowitz**  
President  
Cook County Board of Commissioners

"Through careful planning, Cook County has established a foundation for an effective, regional government. Metropolitan Planning Council has been a great partner in helping identify best practices and bring an array of stakeholders to the table to address the region's needs."



 **TOM STRINGER** Design Partners

Classic Style, Global Sensibility

312.664.0644  
tomstringer.com



**Almost Home Kids™**

Share the Care

# 2014 Annual Report





supported in style.

# stand + deliver

compression hosiery:  
specifically designed for the active  
work lives of beauty professionals.

[standanddeliverhosiery.com](http://standanddeliverhosiery.com)





Photography by Keri Drake

FOLLOW US



CONTACT US

312.255.0288  
info@chez-chicago.com

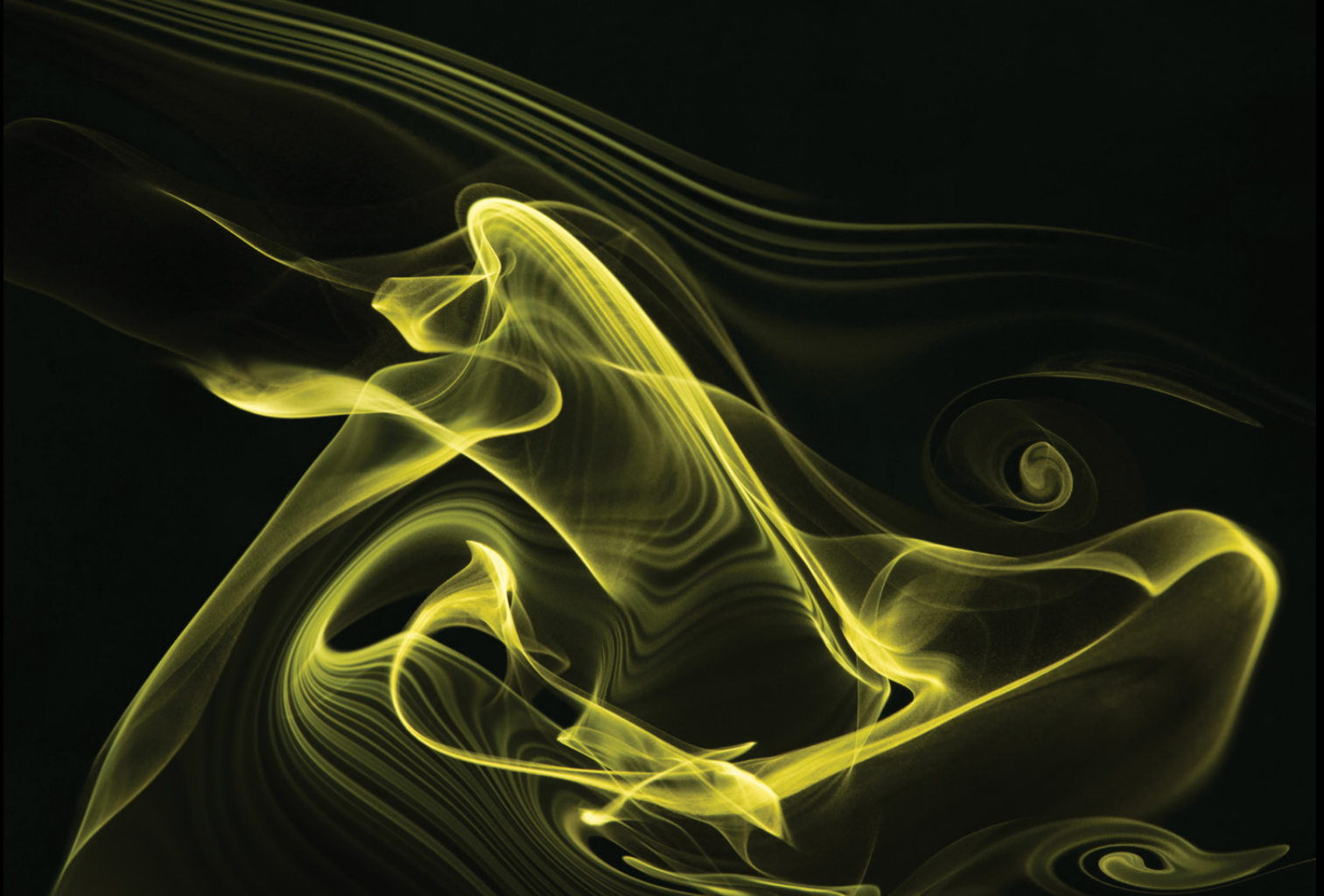
Event Space  
247 E. Ontario  
2nd Floor  
Chicago, Illinois 60611

Corporate Office  
610 N. Fairbanks  
3rd Floor  
Chicago, Illinois 60611

# Viewing Silence

Wacker and Franklin Lobbies

Artists: *Candace Wark and Shirley Nannini*



## How do you make the invisible visible?

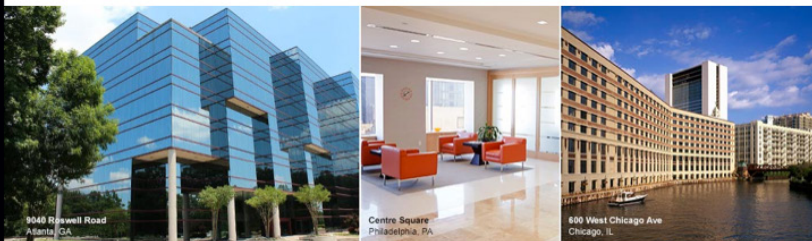
Our intent is to move away from representational photography and embark on an examination of more abstract shapes and forms. We are exploring interactions of wind and light by using an innovative approach to capture the essence of wind movement and convey its transient nature. Smoke is introduced into a wind tunnel and allowed to flow over various objects. As the wind and smoke interact, ethereal patterns are created in the wake as a result of the intrinsic laws of nature. These patterns owe their form to many factors including the speed of the wind, the progression of the coherent fluid patterns and the shape of the object. With these organic images we seek to draw the observer into an evolving, dynamic view of art and nature.



The Cotacachi Honey Fund LLC provides beehives, equipment and training for small scale farmers in Ecuador. The Fund also purchases honey from these farmers at above fair trade prices and sells it in the United States, providing families with a reliable and consistent income source. All profits from sales are reinvested in beekeeping training and infrastructure and for educational scholarships for Ecuadorian children.



[MORE VIDEOS](#)



**EQC NYSE: \$25.74 - \$0.11 (-0.43%) Vol: 54,578**

Equity Commonwealth (NYSE: EQC) is an internally managed and self-advised real estate investment trust (REIT) and one of the largest commercial office REITs in the United States with a portfolio of over 40 million square feet located in 30 states, DC and Australia. Equity Commonwealth is based in Chicago, IL.

**News**

Tuesday, November 18 2014

Equity Commonwealth Announces Redemption of \$125 million 7.5% Senior Notes

Monday, November 03 2014

Equity Commonwealth Announces Third Quarter 2014 Results

Monday, October 13 2014

Equity Commonwealth Announces Third Quarter 2014 Earnings Conference Call

Tuesday, September 30 2014

Equity Commonwealth Terminates External Management Agreements



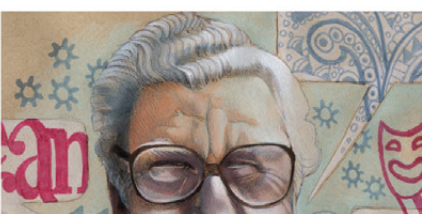


# 2015

## School of Theatre & Music

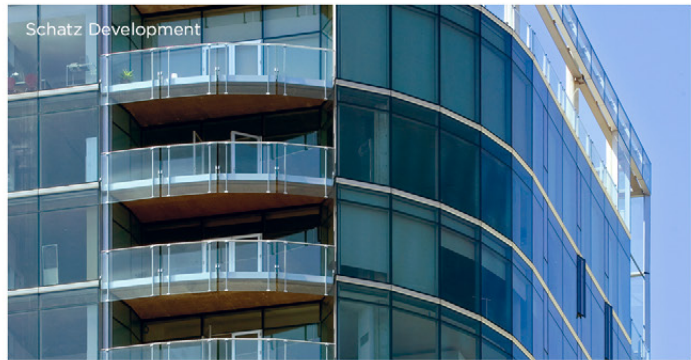


Munro Campagna 28th Annual Calendar



The Schatz Companies includes businesses in the development, real estate and hospitality industries. Learn more about what we do.



Domu **domu** chicagoland apartments

find a place find a neighborhood sign up

2-bedroom in Bucktown

find a place

- The best apartments in all price points and neighborhoods.
- Get instant email and text alerts.
- Communicate directly with landlords.
- Real listings. Real landlords.
- Local. We know Chicago.

THE **SCHATZ** COMPANIES

**Arrow**  
AIRLINES

**PIXEL**  
PRODUCTIONS



The Cotacachi  
**Honey Fund**

**Lazar** Art Advisory



**HENRYDOG**  
DESIGN

**WICKER PARK**  
APARTMENTS

**BITCH**  
MAFIA

**The Schatz Companies** Real estate developer

**PIXEL Productions** Image resource company

**Ariela Lazar** Art consultant

**Wicker Park** Boutique Chicago apartments

**Arrow Airlines** Private luxury airline

**The Cotacachi Honey Fund** Education-related nonprofit

**Henry Dog Design** Pet lifestyle brand

**Bitch Mafia** Human lifestyle brand

TOTAL OPERATING REVENUE  
P 12%. TOTAL OPTIONS AND  
FUTURES VOLUME 1.2 BILLION  
CONTRACTS. AVERAGE DAILY  
VOLUME UP 4%. TOTAL INDEX  
OPTIONS UP 22%. INCREASE  
QUARTERLY DIVIDEND BY 22%  
IX OPTIONS UP 28%. ADJUSTED  
OPERATING MARGIN OF 50.8%  
PX WEEKLYS OPTIONS UP 98%  
DJUSTED DILUTED EPS UP 20%  
IX FUTURES UP 67%. TOTAL  
STOCKHOLDER RETURN OF 81%

**CBOE HOLDINGS™**

**2013 Annual Report**

**Block 37**

Block Thirty Seven encompasses an entire city block in downtown Chicago's Loop neighborhood. Liska developed brand guidelines and designed materials to attract potential retail tenants.

**Chez Paree**

The Chez Paree opened in 1932, becoming one of the most sophisticated nightclubs in Chicago for nearly three decades. Liska designed a limited-edition book of photographs, stories and other ephemera to illustrate the colorful history of this Chicago icon.

**The Pritzker Architecture Prize**

Continuing work for the most prestigious international prize in architecture.

**UrbanWorks Architecture**

UrbanWorks is committed to designing socially and environmentally responsible solutions for civic, private and commercial sector clients. Liska redesigned the firm's website to reflect the company's clear, direct approach to projects.

**Northwestern Medicine Lake Forest Hospital**

Magnet-recognized Northwestern Medicine Lake Forest Hospital offers the highest quality of medical care and nursing excellence. Liska created a microsite for Lake Forest Hospital's 2013 Nursing annual report.

**Metropolitan Planning Council**

For 80 years, MPC has played a critical role in bettering the Chicago region by partnering with businesses, communities and governments to address the area's toughest development challenges. Liska continues to design the organization's event materials and various outreach pieces.

**Tom Stringer**

A multi-disciplinary design firm, Tom Stringer creates interiors for a broad spectrum of high-end projects including luxury homes, hotels and restaurants. Liska developed advertising to communicate the firm's design essence and differentiate it from competitors.

**Almost Home Kids**

This annual report features the exceptional work done by this organization that helps medically fragile children transition from the hospital to home.

**12 Benefits Group**

12 Benefits Group developed a line of compression knee-highs for the health and well-being of beauty professionals. Liska created the brand identity, marketing materials and packaging for this product.

**Chez**

Chez is a unique wedding and event space located just east of Chicago's magnificent mile. Liska was involved in developing the brand identity, advertising and website.

**CBRE/U.S. Equities**

CBRE/U.S. Equities is considered one of the best property managers in the country. Liska helps create awareness of various events for tenants and visitors through a series of print and digital media.

**The Cotacachi Honey Fund**

Established by Chicago high school students, The Cotacachi Honey Fund provides beehives and training to farmers in Ecuador. The Fund purchases the honey and sells it in the US, donating profits to scholarships for Ecuadorian children. Liska designed this e-commerce website.

**Equity Commonwealth**

Equity Commonwealth is one of the largest commercial real estate investment trusts in the US. Liska designed a website to showcase this REIT's scope, properties and investor and tenant information.

**Munro Campagna Artist Representatives**

Liska worked with Munro Campagna to design their 28th annual calendar. This year, it features University of Chicago, School of Theatre and Music.

**The Schatz Companies**

The Schatz Companies has developed a number of significant new residential, commercial and hospitality projects in Chicago. Liska worked closely with the firm on a company rebrand and website.

**CBOE Holdings, Inc.**

Through a blend of technology and open outcry, CBOE consistently ranks as the number one exchange for options. As part of our ongoing relationship with the world's largest options market, Liska designed the 2013 Annual Report.

